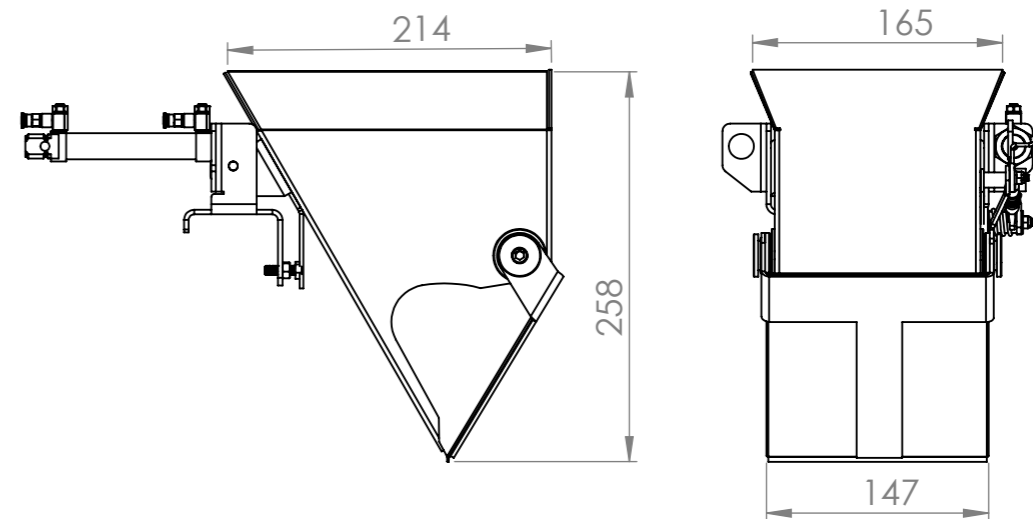


N.º	DESCRIPCIÓN	CANT	Codigo
1	2971301 ESTRUCTURA BOL 1 TAPA VP45	1	15246
2	2971305 TAPA BOL VP45 1 TAPA	1	15247
3	297-04-10 PALANCA DERECHA	1	3271
4	ROTULAS IGU AJUSTE CIERRE (26338) 2970411 CORTA 56 MM	1	26338
5	2970409 Casquillo giro tapa	2	7877
6	2970407 Arandela 1.5 MM	2	7880
7	TORNILLO ALLEN M6*10	2	912610
8	2970415 Resorte Bol Inox	1	6240
9	Casquillo 0810 P11	1	4832
10	2383411 TOPE ESCENTRICA	1	4168
11	Tornillo Allen Inox M5*10 DIN912	1	912510
12	VP450908 SOPORTE BOL CELULA	1	29359
13	Cilindro Neumato 16*50 ISO	1	95000-1650
14	Empujador Piston	1	4180
15	TUERCA M16X1.5	1	439-16
16	Regulador Caudal M5 Festo	2	96010-M5
17	Racord M5 T4	2	96005-4M5
18	ARANDELA M5 ANCHA INOX	1	9021-5
19	Tuerca Autoblocante M5	2	985-5



F:\DISEÑO\WEIGMA\VP45\AAA GRUPOS VP45\2971300 BOL VP45 1 TAPA Vers.01\2971300 ASEMBLY BOL 1 TAPA VP45Predeterminado
 F:\DISEÑO\WEIGMA\VP45\AAA GRUPOS VP45\2971300 BOL VP45 1 TAPA Vers.01\2971300 ASEMBLY BOL 1 TAPA VP45

UNLESS OTHERWISE SPECIFIED: DIMENSIONS ARE IN MILLIMETERS SURFACE FINISH: TOLERANCES: LINEAR: ANGULAR:		FINISH: ARENADO	DEBUR AND BREAK SHARP EDGES	CODE: 10316	REVISION Vers.01
DRAWN			WEIGMA ® TITLE: RECIPIENTE VP45 1 TAPA Vers.01		
CHK'D					
APPV'D					
MFG					
Q.A					
MATERIAL: AINI-304			DWG: 2971300 ASEMBLY BOL 1 TAPA VP45		A3
WEIGHT:			SCALE:1:5		SHEET 1 OF 1